

OmniCure® LX50X

Windows Control Panel User Guide

Applicable for the following UV LED Head Controller models:

Model	Part Numbers
LX500-2 (supports two LED Heads)	010-00369R
LX500-4 (supports four LED Heads)	010-00375R

Excelitas Canada Inc.
2260 Argentia Road
Mississauga (ON)
L5N 6H7 Canada
+1 905.821.2600
www.excelitas.com

035-00666R Rev 0

OmniCure® LX500 Series

UV Curing Solutions

Installation/Reference Guide

035-00666R

Excelitas Canada Inc. 2016

All rights reserved

No part of this publication may be reproduced, transmitted, transcribed, stored in a retrieval system or translated into any language in and form by any means without the prior written consent of Excelitas Canada Inc. every effort has been made to ensure information in this manual is accurate, however, information in this manual is subject to change without notice and does not represent a commitment on the part of the authors.

Trademarks:

OmniCure® is a trademark of Excelitas Canada Inc. All rights reserved. All other product names are trademarks of their respective owners. All product or software photos shown are for reference only and are subjected to change without notice.

Made in Canada. Doc. No. 035-00666R

<http://www.excelitas.com/omnicure>

Excelitas Canada Inc. 2016

All rights reserved

OmniCure® LX500 Series

UV Curing Solutions

Revision History

Revision #	Comments
Rev 0	Initial Release

Table of Contents

1	Introduction	1
2	Installation	2
2.1	Installing the USB Driver	2
2.2	LX50X Control Panel Installation	3
3	Using the Control Panel	5
3.1	Main Control Panel.....	5
3.1.1	Connection Section	5
3.1.2	Calibration Section	5
3.1.3	LED Info Section	6
3.1.4	LED Control Section	6
3.1.5	SD Card Info Section	7
3.1.6	Extended Controls Section	8
3.2	Settings Window	9
3.3	StepCure Window	9
4	Troubleshooting	11
4.1	Error Codes	11
5	Contact Information	13

1 Introduction

The LX50X Windows Control Panel is a Graphic User Interface (GUI) that provides remote access and control of the OmniCure LX500 UV LED Spot Curing System via a Personal Computer (PC) This manual includes a descriptive overview of installation, capabilities and operation.

This user manual covers the following models:

LX500-2	010-00369R
LX500-4	010-00375R

Excelitas Technologies recommends reading this guide to discover all features of the OmniCure® LX50X series Windows Control Panel prior to use.

For more detailed information the OmniCure LX500 Series UV LED Spot Curing System and Accessories please visit our website at <http://www.excelitas.com/Pages/Product/OmniCure-LX500.aspx> or call us at 905-821-2600 and toll free 1-800-668-8752 (USA and CAN only).

2 Installation

2.1 Installing the USB Driver

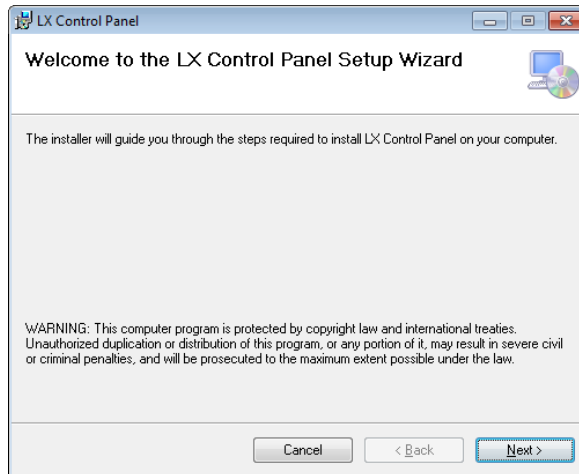
Before the LX Control Panel can be used, the USB driver for the LX50X must be installed. To install the USB driver, follow these steps:

1. Download the USB Driver onto the computer.
2. Unpack the driver into a folder on the computer.
3. Connect the LX50X to the computer.
4. Power on the LX50X.
5. When prompted for a driver for the LX50X, select "Browse my computer for driver software".
6. Click on Browse, select the folder the driver was unpacked to in step 2.
7. Click on Next.
8. Allow the driver installation to complete.

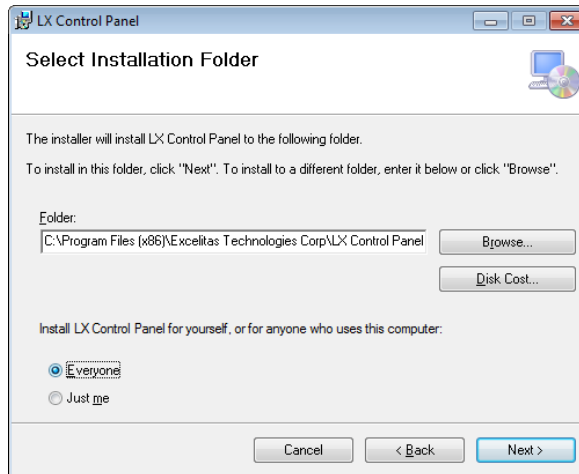
2.2 LX50X Control Panel Installation

To install the LX Control Panel, follow these steps:

1. Download the LX Control Panel onto the computer.
2. Unpack the software into a folder on the computer.
3. In the folder, double click on setup.exe.
4. When the installer opens, Click on Next to continue



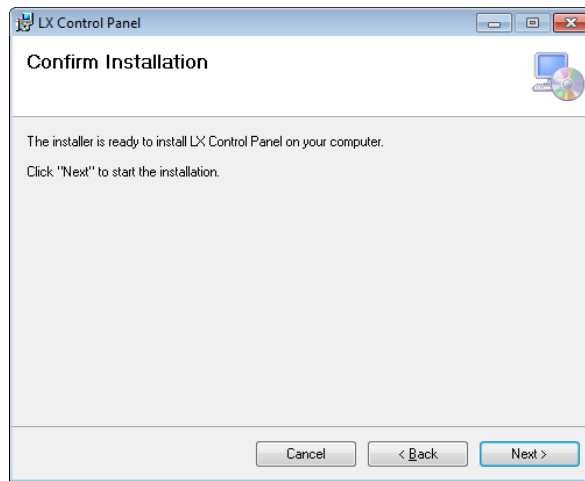
5. Select the destination folder, the default is recommended. Also select if the control panel is to be made available to all user accounts on the computer, or just the installers account.



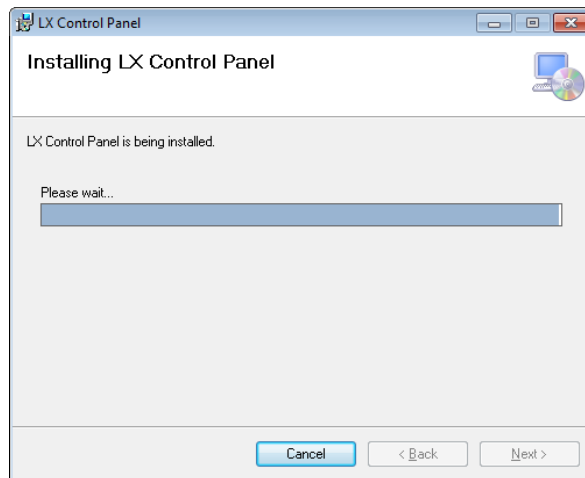
6. Confirm that the installation is to take place.

OmniCure® LX500 Series

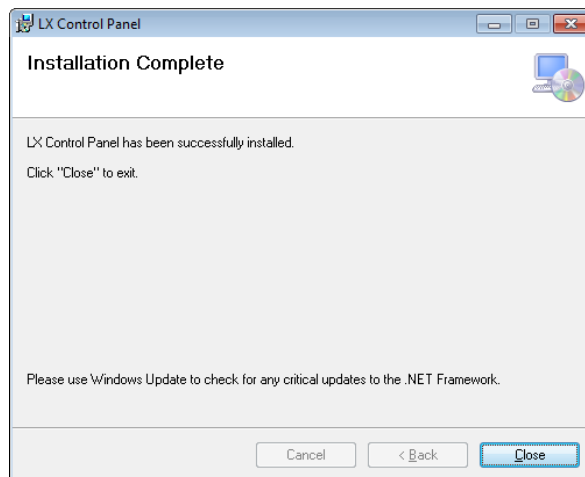
UV Curing Solutions



7. Wait for the installation to complete.



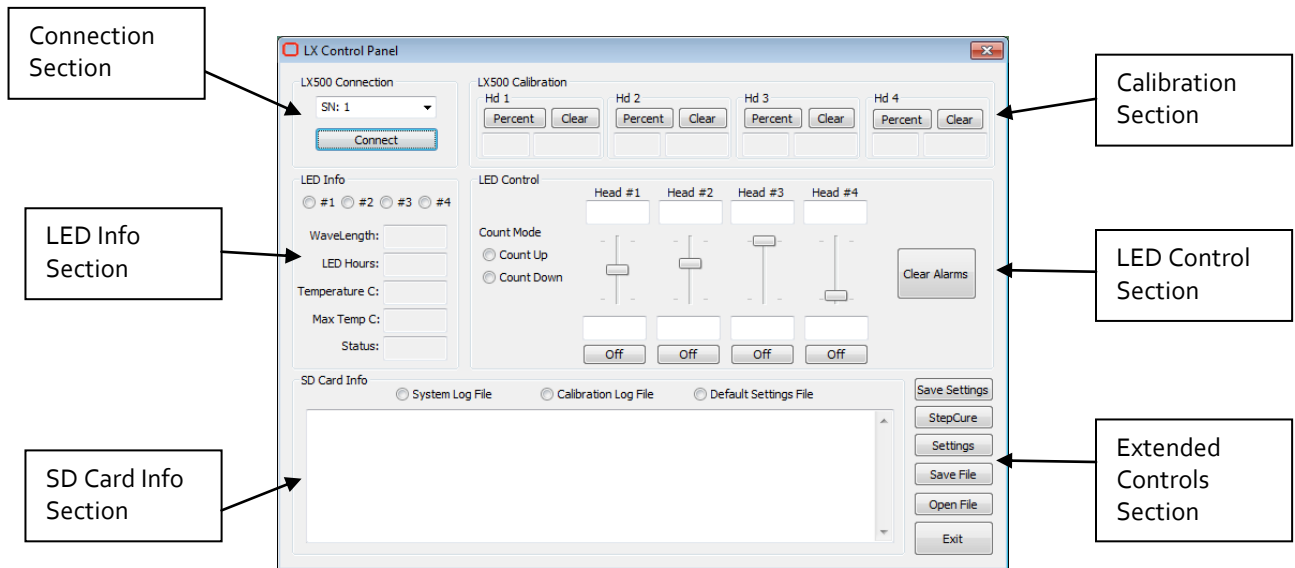
8. Once the installation is complete, Close the installer.



3 Using the Control Panel

3.1 Main Control Panel

The main control panel is divided into 6 sections, the Connection, Calibration, LED Info, LED Control, SD Card Info and extended controls sections.

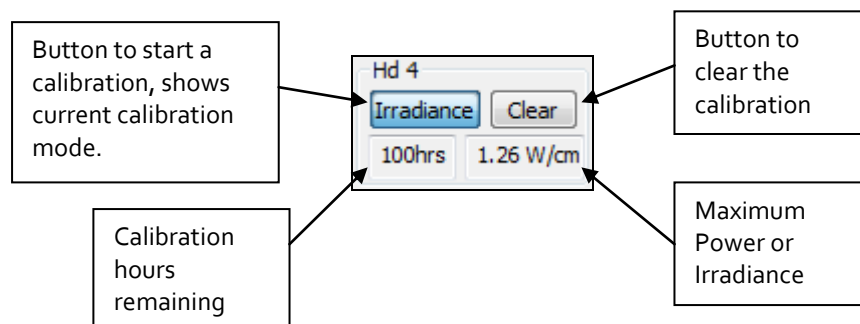


3.1.1 Connection Section

The List of device serial numbers is only populated during the start-up of the control panel. The control panel will search out any devices that are present in the computer, and not currently being communicated with. If another copy of the control panel is open and communicating with a device, that device will not be present in this list. Select the device you wish to communicate with and click Connect.

3.1.2 Calibration Section

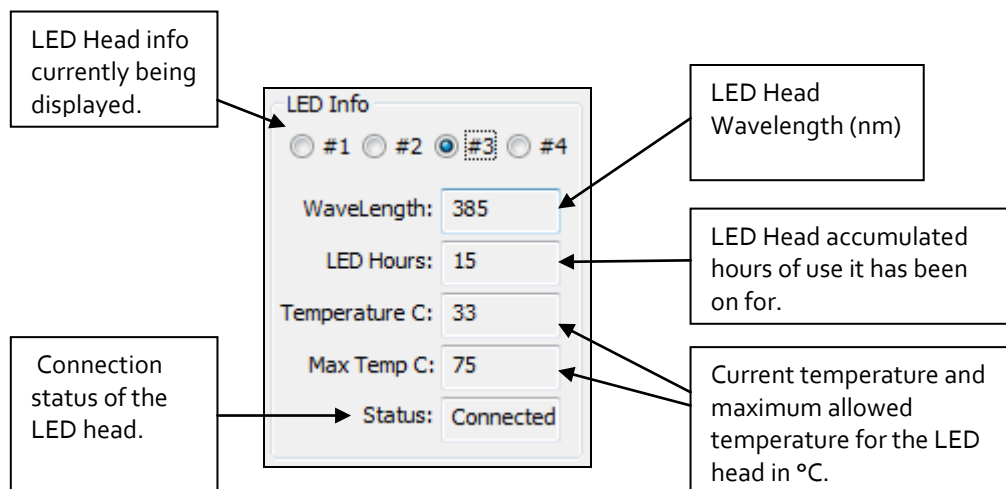
The calibration section is divided into the four LED heads, each head control has a button and status for calibrating, a button to clear the calibration, a box showing the calibration hours remaining and a box showing the maximum power or irradiance.



3.1.3 LED Info Section

The LED Info section shows the information for the LED head selected. This includes the centre wavelength, number of hours on the LED head, current temperature in °C, maximum temperature in °C and the current connection status. The connection statuses can be:

Connection Status	Description
Connected	LED head is currently connected and operational
Disconnected	LED head was connected after the LX50X was powered on, and was disconnected afterwards. The LX50X must be turned off before reconnecting the LED head.
Not Present	LED head was not connected when the LX50X was powered on.
Unknown	The LED head state is unknown; restart the LX50X and Control Panel.

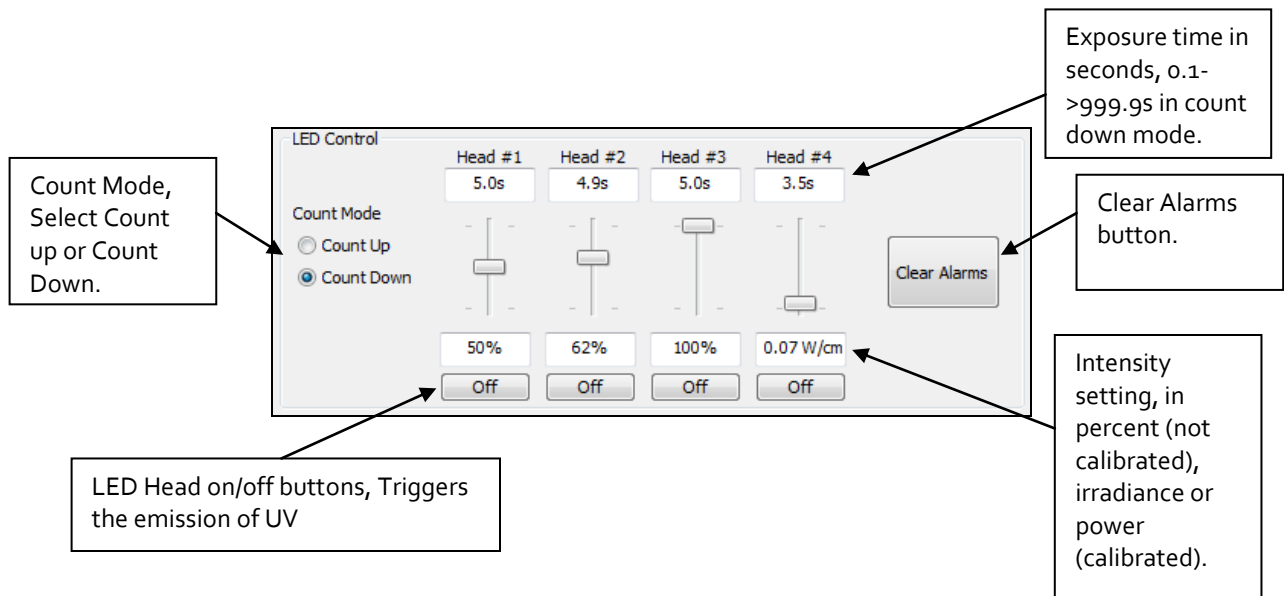


3.1.4 LED Control Section

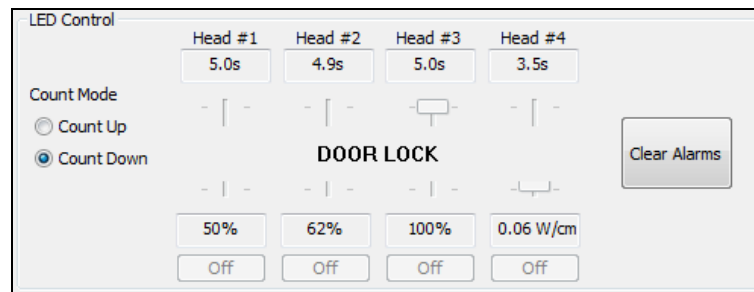
The LED control section allows for modification of the current settings. The intensities of the LED heads can be adjusted via the sliders, or manually entered in the text entry boxes below the sliders. The intensity can only be entered in the format it is calibrated for. For example, if head #4 is calibrated for irradiance, an irradiance value must be entered into the text entry box. Refer to the calibration section to know what the maximum allowed irradiance is. If a value that exceeds the maximum irradiance is entered, the control panel will return the value to the previous set value. The exposure time can be entered if the unit is in count down mode, if in count up mode, the value is fixed at 0.0s. The count mode can be changed at any time, however if it is changed in the LX50X, the control panel will automatically detect this change and update its setting. Alarms are shown as dialog boxes on top of the control panel, if an alarm occurs it can be cleared by clicking the clear alarms button. If the alarm does not clear, the LX50X must be powered off and back on to clear the alarm.

OmniCure® LX500 Series

UV Curing Solutions



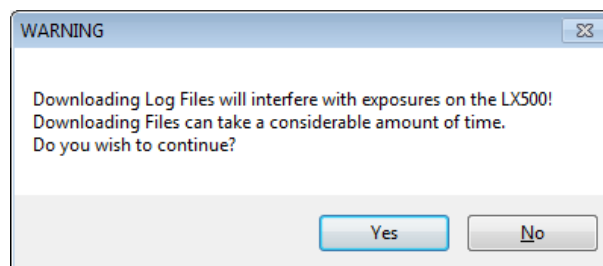
If the door interlock is activated, the LED Control section will appear with a DOOR LOCK message across the controls.

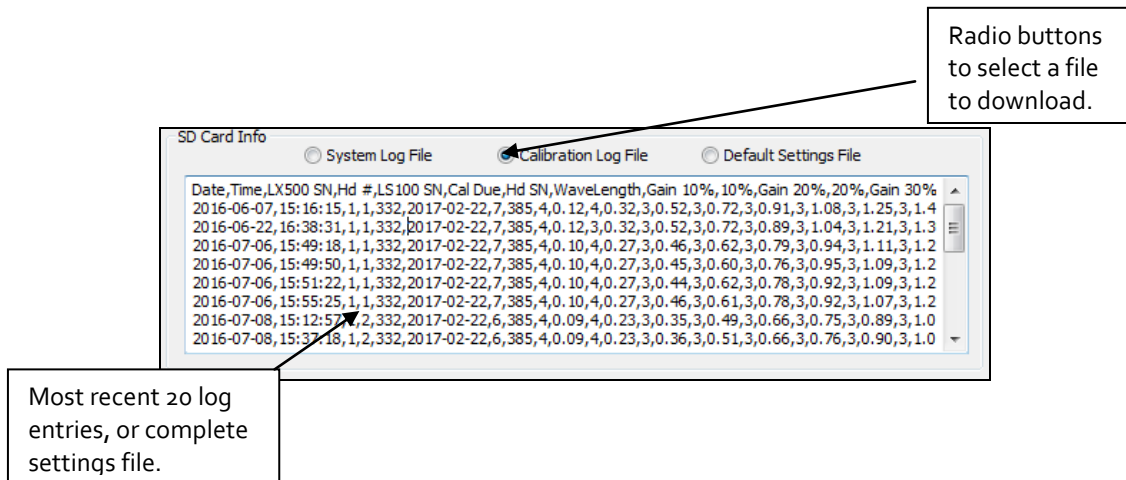


3.1.5 SD Card Info Section

The SD Card info section allows viewing of the log files and system settings file. Click on the file you would like to view and it will appear in the text box. Due to the large size of the files, they may take some time to download, and the text box will only show the most recent 20 entries. See the extended controls section to view the complete log files.

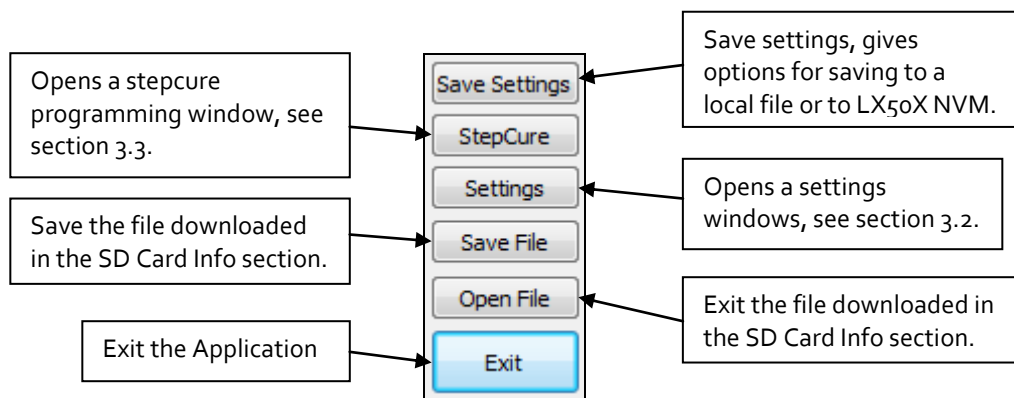
When a file is selected, a warning message is displayed informing of the impact on exposure performance of the LX50X. Only download files if the LX50X is not currently performing exposure operations. If the LX50X is performing exposure operations, click no, otherwise click yes to download the log or settings file.



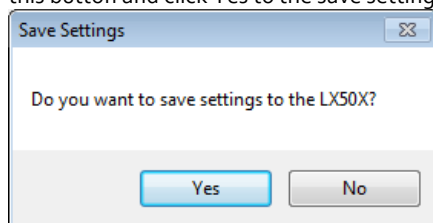


3.1.6 Extended Controls Section

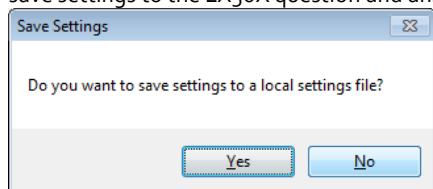
The extended controls section has options to program Step Cure, change system settings, saving and viewing files downloaded by the SD Card, save settings and exiting the application.



The Save settings button will ask two questions, the first is asking if the settings are to be saved to the LX50X. Any changes made by the control panel are not automatically saved to the LX50X. To save the settings, click this button and click Yes to the save settings to the LX50X question.



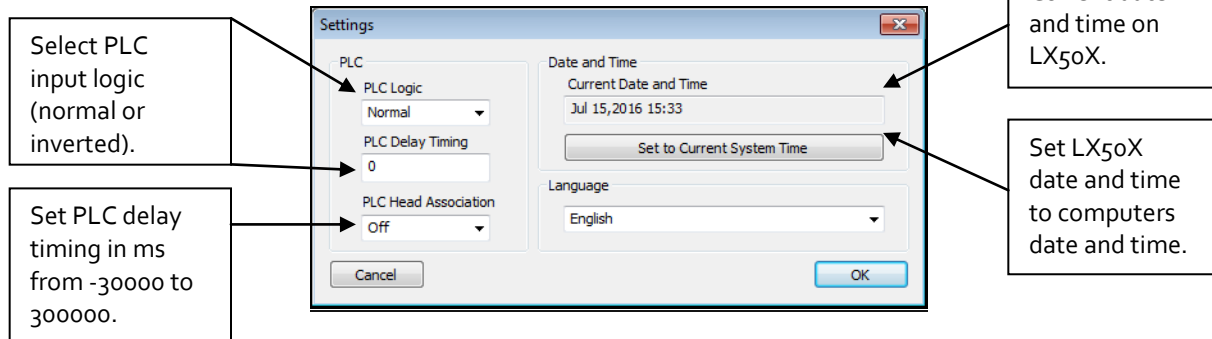
If a local settings file is required, that will be uploaded to the LX50X at a later date by SD card, answer no to the save settings to the LX50X question and answer yes to the save settings to a local settings file.



This will then ask for a filename and location to save the settings to. This file can be used to update LX50X units by SD card.

3.2 Settings Window

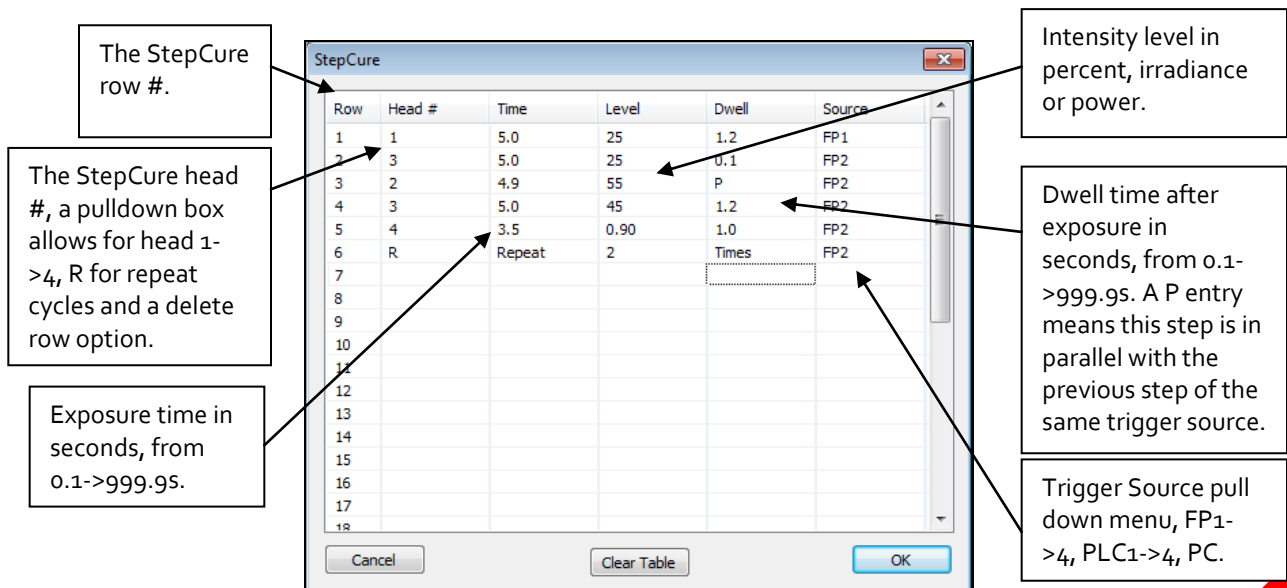
The settings window is used to adjust items that are in the maintenance screen window on the LX50X unit. These include setting the date and time, setting the PLC auxiliary output settings (Nitrogen) head association and delay time in ms. It also includes the PLC logic and the user interface language.



The PLC logic will lock the front panel of the LX50X, due to the logic inversion, an inverted PLC signal must be applied to the front panel lock input to unlock the LX50X unit. The language option at the time of writing this document only supports english. The date and time is active immediately, all other settings in this window are only applied when the ok button is clicked.

3.3 StepCure Window

The StepCure window shows the table as it appears in the LX50X. It has 32 rows for entering StepCure programming. Each row has a head that can be associated with the step, an exposure time in seconds, an intensity level in percentage, irradiance or power. It also has a dwell time in seconds and a trigger source.



OmniCure® LX500 Series

UV Curing Solutions

The StepCure program runs in the LX50X and cannot be triggered from the control panel. It runs the program based on the trigger source, so in the example above if foot pedal 2 is pressed, row 2 and 3 will run in parallel, followed by row 4 and so on. See the LX50X user guide for examples of StepCure programming. Note: A source of PC is for the S2000 command set, not for running a StepCure program from the PC control panel.

The StepCure is only downloaded to the LX50X when the ok button is clicked, to clear the StepCure table click the clear table button. A single row can be deleted by selecting "Del" in the head # pull down menu for the row.

4 Troubleshooting

System alarms and LED head alarms will display a popup message box. See the LX50X user guide for actions to perform when an error occurs.

If the control panel fails to recognize the unit, verify the driver is installed as described in Section 2.0. Also ensure that the serial port is not in use by another windows application.

If problems persist beyond these troubleshooting points, please contact Excelitas Technologies Service Department (refer to [Section 5, "Contact Information"](#)).

4.1 Error Codes

Error	Description	Solution
1	The head(X) has exceeded the allowable operating temperature. (error code will remain present until cleared, however the head will be operative again when the temperature is below the maximum allowable). The channel select button is not required to clear this error. Subsequent triggers will clear the alarm if the temperature of the LED has recovered to below the over-temperature cut-off threshold. (This applies to the front panel Start/Stop button, Foot Pedal, and PLC I/O Start/Stop inputs).	<ul style="list-style-type: none"> Check position of clamp location on the head. Refer to Error! Reference source not found. Check emission mode setting. Check timing mode setting. Check lens cleanliness.
2	The head(X) has a short circuit.	<ul style="list-style-type: none"> Check LED head to controller connections.
3	The head (X) has been disconnected after power on. (The head will remain disabled until the power is cycled).	<ul style="list-style-type: none"> Check LED head to controller connections.
4	The head is open circuit. (The head will remain disabled until the power is cycled).	<ul style="list-style-type: none"> Check LED head to controller connections. Check LED head wire for damage.
5	The 1-wire memory chip for head (X) has an error. (The head will remain disabled until the power is cycled).	<ul style="list-style-type: none"> Check LED head to controller connections.
6	No temperature reading from head (X). (The head will be deactivated until the power is cycled).	<ul style="list-style-type: none"> Check LED head to controller connections.
7	Head is in a different controller serial # or different head connector position.	<ul style="list-style-type: none"> Power off unit and plug into controller serial # and head position specified by error message. Press select to clear this error and accept the new connection.
8	Intensity setting in the StepCure profile exceeds the capability of the head. Only occurs when the head is calibrated, and the StepCure setting is an irradiance or power setting. This also can occur if the setting in StepCure is an irradiance setting, and the head is calibrated in power, or vice versa.	<ul style="list-style-type: none"> Adjust the intensity setting in the StepCure profile. Recalibrate the head, ensure that the peak intensity is found prior to calibration.
System Error 1	Internal hardware error	<ul style="list-style-type: none"> Reset system. If error code persists contact service center.

OmniCure® LX500 Series

UV Curing Solutions

Error	Description	Solution
System Error 2	Internal Communication failure	<ul style="list-style-type: none">• Reset system.• If error code persists contact service center.
System Error 3	Non-Volatile Memory error	<ul style="list-style-type: none">• Reset system.• If error code persists contact service center.
System Error 4	Not used	<ul style="list-style-type: none">• Not used
System Error 5	Inadequate system performance	<ul style="list-style-type: none">• The system cannot keep up with the control inputs, slow down the control inputs for proper operation.

Table 1 Error Codes

* X = LED Input Ch1, Ch2, Ch3, Ch4

5 Contact Information

Excelitas Canada Inc.
2260 Argentia Road
Mississauga, Ontario
L5N 6H7 CANADA

Tel.: +1 905 821-2600

Toll: +1 800 668-8752 (USA and Canada)

Fax: +1 905 821-2055

<http://www.excelitas.com/Pages/Product/OmniCure.aspx>

Technical Assistance:

techsupport@excelitas.com

<http://www.excelitas.com/Pages/Support/Service-Instructions.aspx>

For a complete listing of Authorized OmniCure Distributors and Service Centres please go to

<http://www.excelitas.com/Pages/Support/Service-Centers.aspx>.